



在项目中 使用 中国历代人物传记资料库

王宏甦

中国历代人物传记资料库项目经理

链接: <http://t.cn/E9yM5bP> 密码: nept

HOME / 關於我們 /

核心機構與編輯委員會

核心機構

- [哈佛大學費正清研究中心 \(Fairbank Center for Chinese Studies, Harvard University\)](#)
- [中央研究院歷史語言研究所 \(Institute of History and Philology of Academia Sinica\)](#)
- [北京大學中國古代史研究中心 \(Center for Research on Ancient Chinese History at Peking University\)](#)

https://cn.bing.com/search?q=cbdb&qs=n&form=QBLH&sp=-1&pq=cbdb&sc=8-4&sk=&cvid=F1E4552AA0124C5B9DBCD1461

国内版 国际版

cbdb

Web Images Videos Academic Dict Maps

Looks like you're searching in English. Try our international version for better English language search results.

540,000 Results Any time

China Biographical Database Project (CBDB)

2019-4-26 · Welcome Introduction. The China Biographical Database is a freely accessible relational database with biographical information about approximately 422,600 individuals as of September 2018, primarily from the 7th through 19th centuries. With both online and offline versions, the data is meant to be useful for statistical, social network, and spatial analysis as well as serving as a kind of biographical reference. The image below shows the spatial distribution of a cross dynastic subset of 190,000 people in CBDB by basic affiliations (籍貫).

<https://projects.iq.harvard.edu/cbdb/home>

CBDB API | 中國歷代人物傳記資料庫 (CBDB)

2019-4-27 · 簡介 API (application programming interfaces) 是一種允許其他資料庫都取用其他資料庫的資訊, 來補充自己未能著重的資訊。我們未來會自動將 CBDB 更新的消息送至該信箱。請點選...

<https://projects.iq.harvard.edu/chinese/cbdb/cbdb-api>

CBDB | Official Website of CBDB

CBDB combine impressive musicianship and solid songwriting with n... time —a trifecta that is rarely seen in any band, let alone one as amb...

<https://cbdbmusic.com>

https://www.baidu.com/s?wd=cbdb&rsrv_spt=1&rsrv_iqid=0xab1145490000f783&issp=1&tf=8&rsrv_bp=1&...

Baidu 百度

cbdb

网页 资讯 视频 图片 知道 文库 贴吧 采购 地图 更多»

百度为您找到相关结果约1,100,000个

您可以仅查看: 英文结果

CBDB 单机版 | 中國歷代人物傳記資料庫 (CBDB)

訂閱CBDB 更新消息 若您希望未來持續收到 CBDB 更新的消息, 請點選以下連結, 輸入您的電... 郵帳號及相關資訊, 我們未來會自動將 CBDB 更新的消息送至該信箱。請點選...

<https://projects.iq.harvard.edu...> - 百度快照

HARVARD UNIVERSITY HARVARD.EDU

China Biographical Database Project (CBDB)

HOME About Us Methodology Sources Events Download Blog 中文

Welcome

Introduction

The China Biographical Database is a freely accessible relational database with biographical information about approximately **417,000 individuals as of August 2017**, primarily from the 7th through 19th centuries. With both online and offline versions, the data is meant to be useful for statistical, social network, and spatial analysis as well as serving as a kind of biographical reference. The image below shows the **spatial distribution** of a cross dynastic subset of 190,000 people in CBDB by basic affiliations (籍貫).

How to Cite CBDB

Harvard University, Academia Sinica, and Peking University, China Biographical Database (January 1, 2018). <https://projects.iq.harvard.edu/cbdb>.

Updates

(April 2017) CBDB's 2017 April update is released! Download the standalone database [here!](#)

(April 2017) New blog post about ChinaX is up! See [here](#).

(April 2017) Ming Government Official Titles: A Crowd-

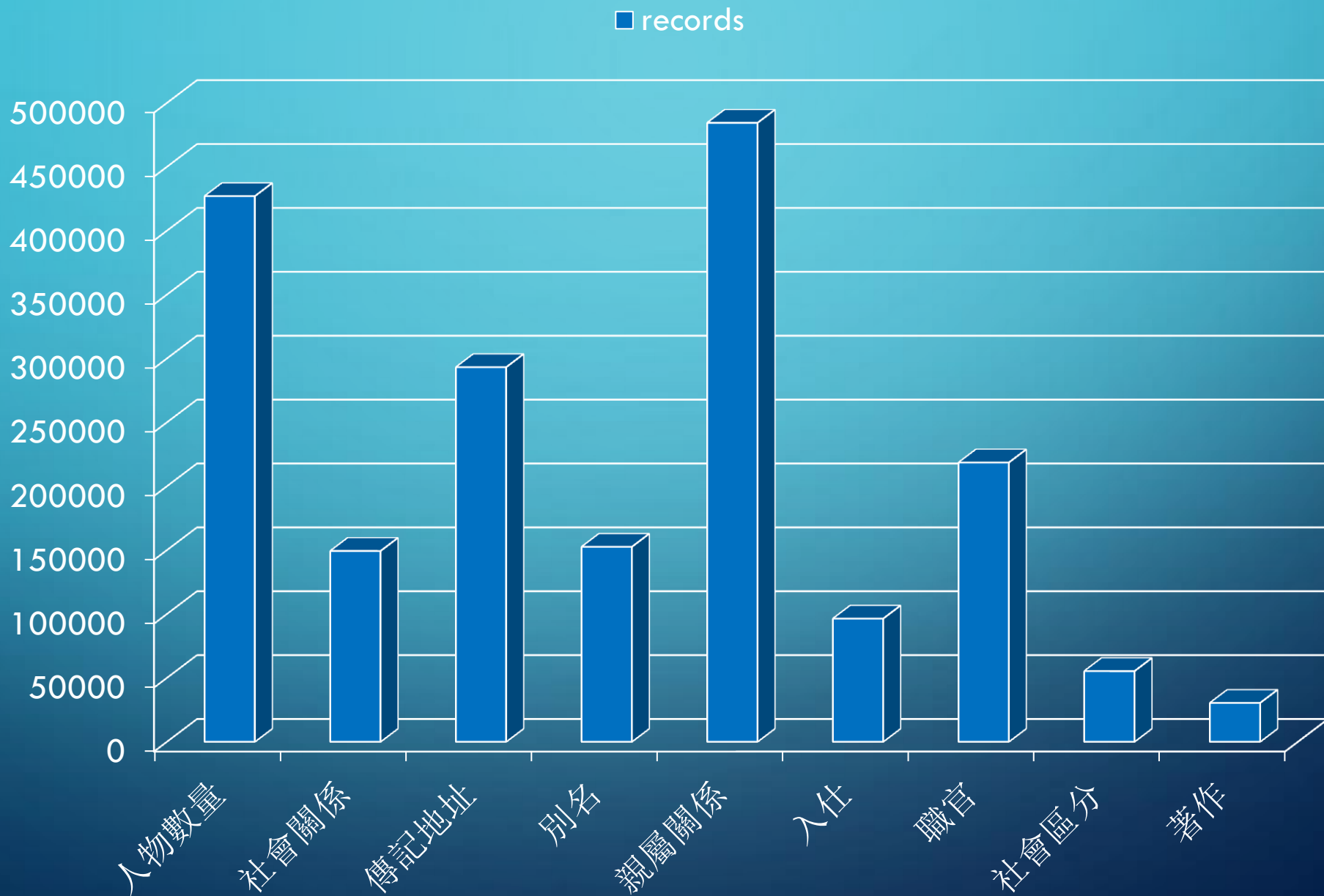
中國歷史地理信息系統的計劃經... 製作而成。您可以從...

(China Biographical Database) 是一個大型資料庫, 其遠程目標在於系統性地收集中國歷代人物傳記資料, 並將其內容毫無限制地公開。截至2017年4月為止, 本資料庫共...

CBDB: 427,000 人物的分布时代

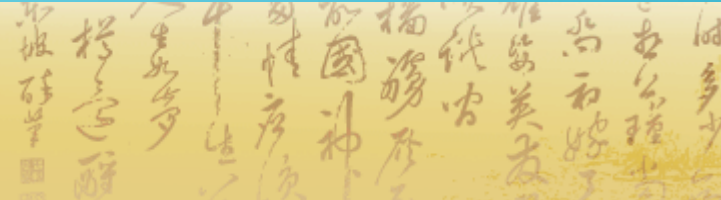
时代	数据量
唐 Tang	53607
五代十国 5 Dynasties	1248
宋 Song	50712
辽 Liao	324
金 Jin	530
元 Yuan	22438
明 Ming	185475
清 Qing	85745
民国 Minguo	3875
其他 Other	23093

CBDB 2019.4 数据种类



中國歷代人物傳記資料庫

中央研究院歷史語言研究所、哈佛大學、北京大學中國古代史研究中心合作開發
Developed through collaboration among Academia Sinica, Harvard University, and Peking University



A Subset of the Data on Sima Guang: 有关司马光的部分数据：

Name 姓名	Dates 日期	Offices 任官	Associations 社会关系
Sima Guang 司马光	1019- 1086	(1) 1059 度支勾 院 Budget Auditor; (2) 1085 门下侍郎 Executive of the Chancellery; (3) 1086 左仆射兼 门下侍郎 Left Executive, Dept of Ministries [....]	(1) Yuanyou coalition member (元佑党); (2) An Dun 安惇 Desires opposed by; (3) Chao Buzhi 晁补之 Sacrificial prayer written by; (4) Chen Jian 陈荐 Sacrificial prayer written for; (5) Chen Min 陈敏 Honored by; (6) Cheng Yi 程颐 Recommended; (7) Ding Du 丁度 Sacrificial prayer written for; (8) Fan Chunli 范纯礼 Patron of; [....]

Reorganizing the Data (2nd Version) Database Normalization

重新编排数据（第二版）数据库三范式

People 人物

ID	Name	Dates
1	Sima Guang 司马光	1019-1086
2	An Dun 安惇	
3	Chao Buzhi 晁补之	
4	Chen Jian(5) 陈荐	
5	Chen Min 陈敏	
6	Cheng Yi 程颐	
7	Ding Du 丁度	
8	Fan Chunli 范纯礼	

Office Titles 官名

ID	Office Name
1	度支勾院 Budget Auditor
2	门下侍郎 Executive of the Chancellery
3	左仆射兼门下侍郎 Left Executive, Dept of Ministries

Postings Data

任官资料

Person ID	Office ID	Posting Date
1	1	1059
1	2	1085
1	3	1086

Associations 社会关系

ID	Association Type
1	Yuanyou coalition member (元佑党)
2	Desires opposed by
3	Sacrificial prayer written by
4	Sacrificial prayer written for
5	Honored by
6	Recommended
7	Patron of

Associations Data

社会关系资料

Assoc Type ID	Person ID	Assoc ID
1	1	-1
2	1	2
3	1	3
4	1	4
5	1	5
6	1	6
4	1	7
7	1	8

CBDB 用户手册

<https://projects.iq.harvard.edu/cbdb/supporting-documents>

https://projects.iq.harvard.edu/cbdb/supporting-documents



China Biographical Database
Project (CBDB)

HOME

About Us ▾

Methodology ▾

Sources ▾

Events ▾

Download

DOWNLOAD

Download CBDB Standalone Database

Supporting Documents

Presentations and Papers

Download Supporting Software

CBDBRegexMachine

Data Sets

CBDB API

Report an Error

HOME / DOWNLOAD /

Supporting Documents

Supporting Resources

[CBDB Videos](#)

[The CBDB User's Guide, February 28 2015](#)

The latest User Guide. You can find instructions for using the standalone document.

[The CBDB User's Guide \[Chinese\], 2017](#)

Translated by CBDB editors in CBDB.



离线查询系统 在线查询、在线录入系统



← → ↻ <https://cbdb.fas.harvard.edu/cbdbapi/person.php?ic>

```
- Package: {  
  - PersonAuthority: {  
    DataSource: "CBDB",  
    Version: "20131220",  
  - PersonInfo: {  
    - Person: {  
      - BasicInfo: {  
        PersonId: "1762",  
        EngName: "Wang Anshi",  
        ChName: "王安石",  
        IndexYear: "1080",  
        Gender: "0",  
        YearBirth: "1021",  
        DynastyBirth: "北宋",  
        EraBirth: "天禧",  
        EraYearBirth: "5",  
        YearDeath: "1086",  
        DynastyDeath: "北宋",  
        EraDeath: "元祐",  
        EraYearDeath: "1",  
        YearsLived: "66",  
        Dynasty: "宋",  
        JunWang: "太原",
```

SQLite Expert Professional 3.4.17.2230

File Database Import/Export Table View SQL Transaction Scripting Tools Help

Database: CBDB_aw_20180831_sqlite File: C:\Users\Hongsu\Desktop\CBDB_aw_20180831\CBDB_aw_20180831_sqlite.db

CBDB_aw_20180831_sqlite

- addr_belongs_data
- addr_codes
- addr_place_data
- addr_xy
- addresses
- altname_codes
- altname_data
- appointment_type_codes
- assoc_code_type_rel
- assoc_codes
- assoc_data
- assoc_types
- assume_office_codes
- biog_addr_codes
- biog_addr_data
- biog_inst_codes
- biog_inst_data
- biog_main
- biog_source_data
- choronym_codes
- copymissingtables
- copytables

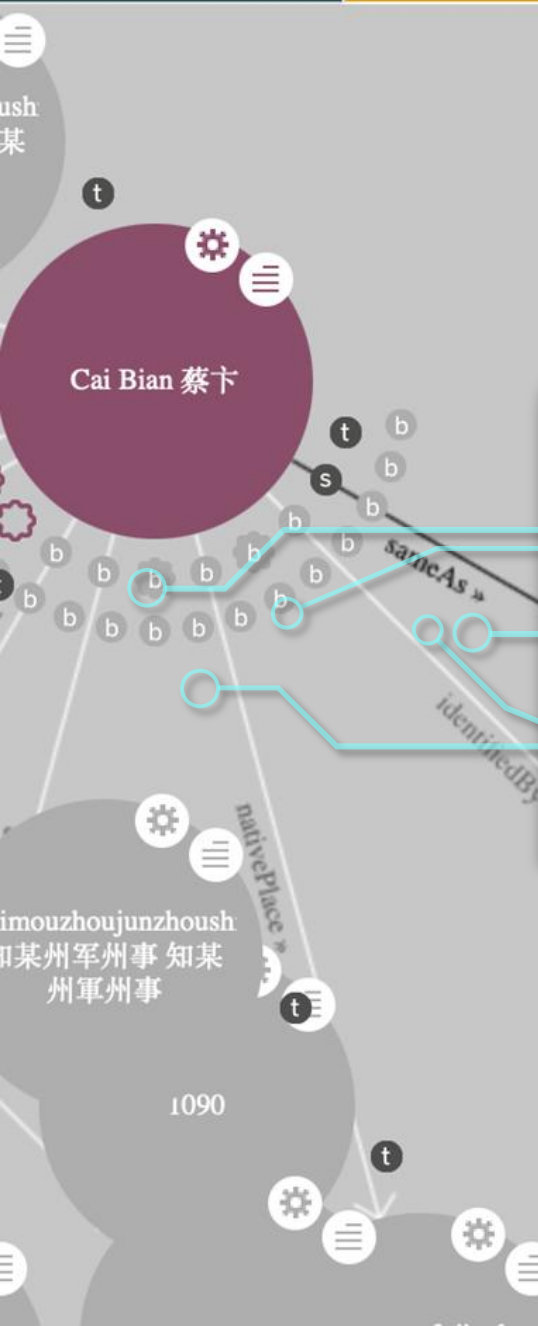
SQL 1 SQL 2

```
1 SELECT * FROM biog_main LIMIT 100
```

Execute SQL Stop

RecNo	tts_sysno	c_personid	c_name	c_name_chn	c_index_year	c...
1	<null>	0	Wei Xiang	未詳	<null>	
2	1	1	An Dun	<待删除>	1101	
3	2	2	An Fang	安昉	1136	
4	3	3	An Tao	安燾	1102	
5	4	4	Zha Dao	查道	1014	

API, SQLite



CBDB 关联数据

上海图书馆

[HTTP://139.224.22.41/](http://139.224.22.41/)

type
Person

gender
男

birthDay
1088

choronym
chenliu

choronym
陈留

choronym
陳留

courtesyName
yuandu

courtesyName
元度

人^C

IRI: <http://www.library.sh.cn/ontology/Person>

is in domain of

卒年^{dp}, 地名^{op}, 姓名(foaf:name)^{dp}, 姓名(shl:name)^{op}, 字^{dp}, 履历^{op}, 性别^{dp}, 时间^{op}, 死亡地^{op},

is in range of

关系主体^{op}, 关系对象^{op}

IRI: <http://www.library.sh.cn/ontology/Relationship>

关系^{op}, 关系主体^{op}, 关系对象^{op}, 关系类型^{dp}

名字^C

IRI: <http://www.library.sh.cn/ontology/Name>

is in domain of

名字类型^{dp}

is in range of

姓名(shl:name)^{op}

开源录入系统

中央研究院数位文化中心、北京邮电大学

<https://github.com/cbdb-project>

develop From: 8/10/2017 To: 11/22/2018

Graph	Actions	Message	Author	Date
		允许修改别名	funqc	10/24/20.
		update	funqc	10/7/20.
		update	funqc	8/20/20.
		Merge branch 'develop' of github....	funqc	7/19/20.
		typo fixed	Hongsu ...	7/17/20.
		修改了部分tts依赖的模块	funqc	7/19/20.
		Merge pull request #4 from cbdb-...	funqc	7/15/20.
		Merge branch 'develop' into to5.5	funqc	7/15/20.
		增加出处	funqc	6/5/201.
		update	funqc	6/5/201.
		Merge pull request #3 from cbdb-...	funqc	7/15/20.
		update	funqc	7/15/20.
		reroll to Qunchao's router version	Hongsu ...	6/6/201.
		reset default router for biog	Hongsu ...	6/6/201.

中國歷代人物傳記資料

Basicinformation 编辑人物基本信息

人名查询

查询人物

Search

共查询到422622条记录

c_personid	c_name_chn	c_name
0	未詳	Wei Xiang
1	安惇	An Dun
2	安邠	An Fang
3	安燾	An Tao
4	查道	Zha Dao



方法论与项目示例

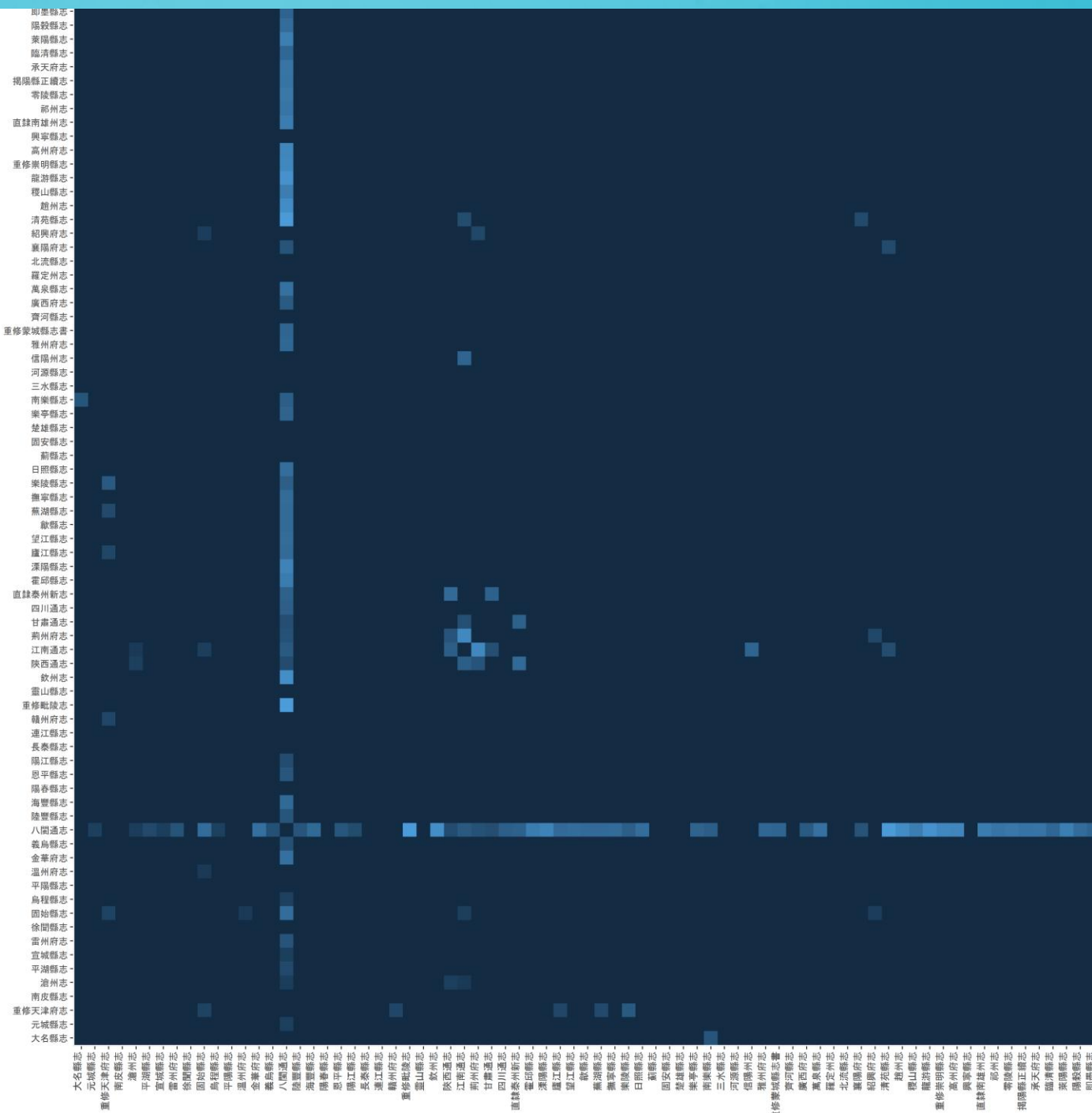
METHODOLOGIES AND SAMPLES



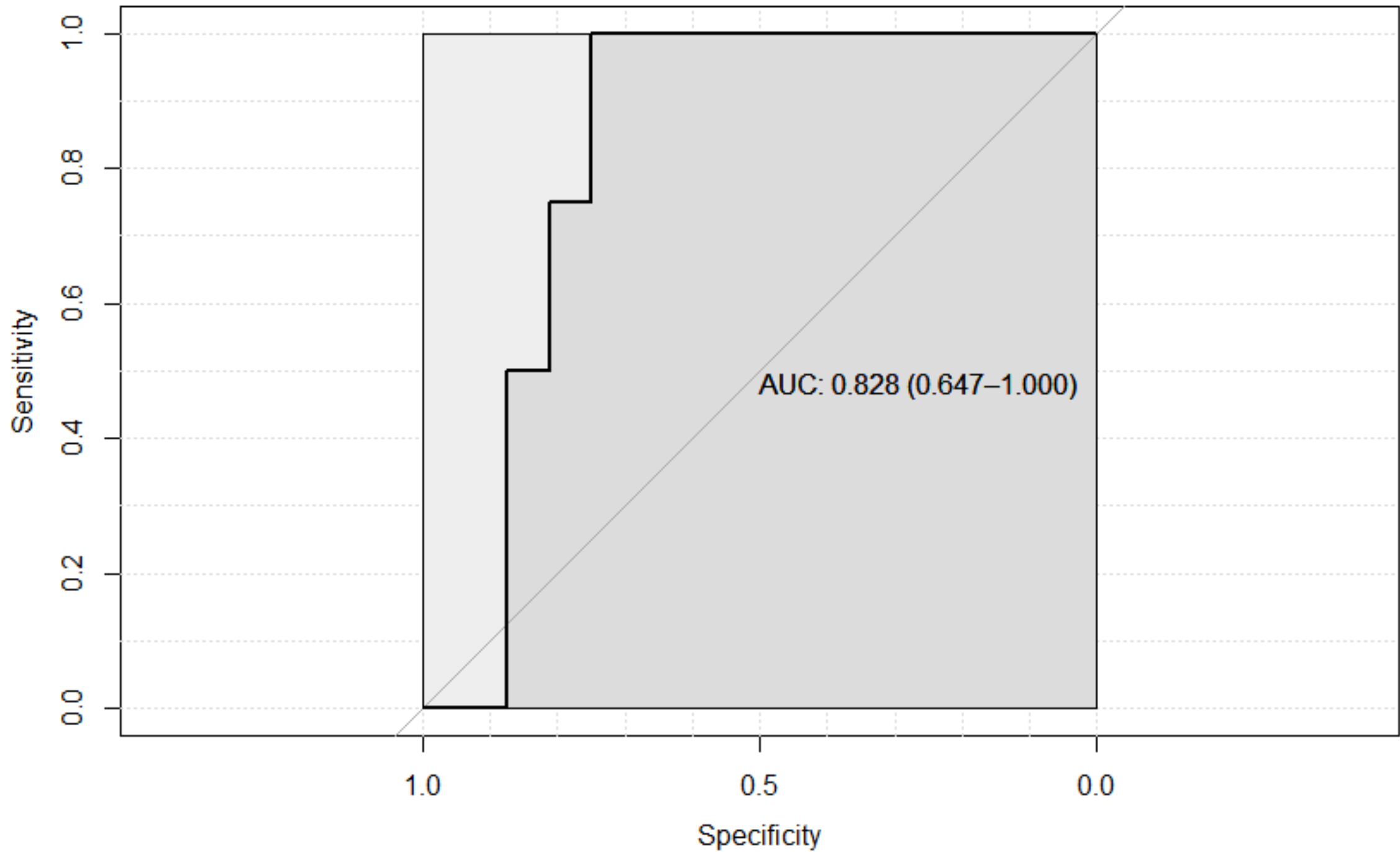
PROSOPOGRAPHY

群体传记学

张三千@哈佛统计系



Book1	Book2	overlap .count	count.adj .1	count.adj .2	percentage overlap	percentage overlap	Y: overlap N:separate
平湖縣志	平湖縣志	266	307	2688	86.64495114	9.895833333	86.64495114Y
元城縣志	大名縣志	422	496	1766	85.08064516	23.89580974	85.08064516Y
宣城縣志	宣城縣志	462	583	550	79.24528302	84	84Y
滄州志	重修天津府志	506	605	7037	83.63636364	7.190564161	83.63636364Y
烏程縣志	烏程縣志	437	688	546	63.51744186	80.03663004	80.03663004Y
固始縣志	固始縣志	203	254	449	79.92125984	45.21158129	79.92125984Y
雷州府志	徐聞縣志	297	2019	432	14.7102526	68.75	68.75Y
重修天津府志	南皮縣志	357	7037	534	5.073184596	66.85393258	66.85393258Y
溫州府志	平陽縣志	485	3578	811	13.55505869	59.8027127	59.8027127Y
義烏縣志	金華府志	450	866	1771	51.9630485	25.40937324	51.9630485Y
海豐縣志	陸豐縣志	103	632	302	16.29746835	34.10596026	34.10596026Y
長泰縣志	八閩通志	133	483	14762	27.53623188	0.900961929	27.53623188Y
八閩通志	漳平縣志	24	14762	90	0.162579596	26.66666667	26.66666667Y
八閩通志	內黃縣志	28	14762	132	0.189676196	21.21212121	21.21212121N

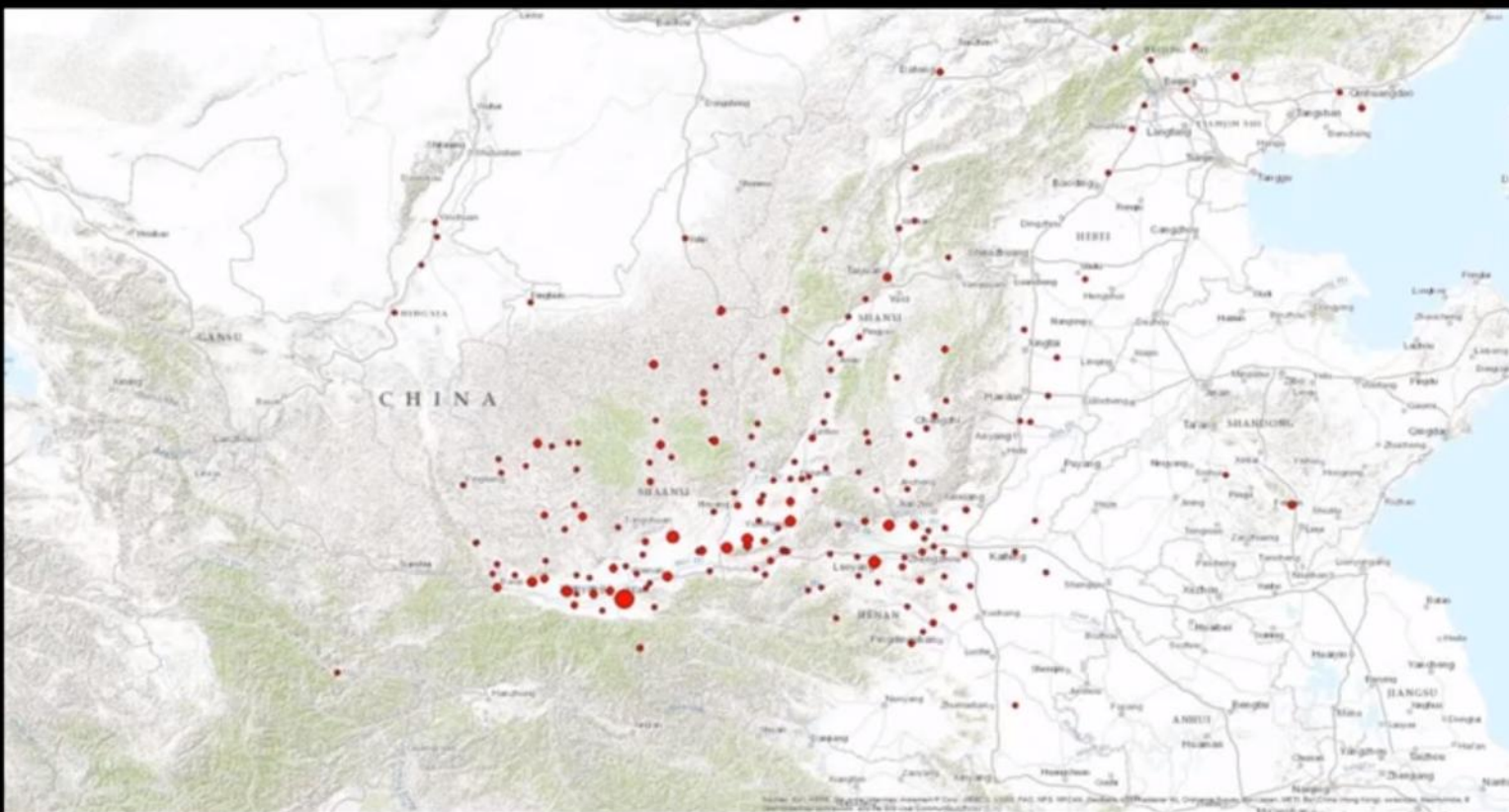


GIS: 唐代的两京走廊

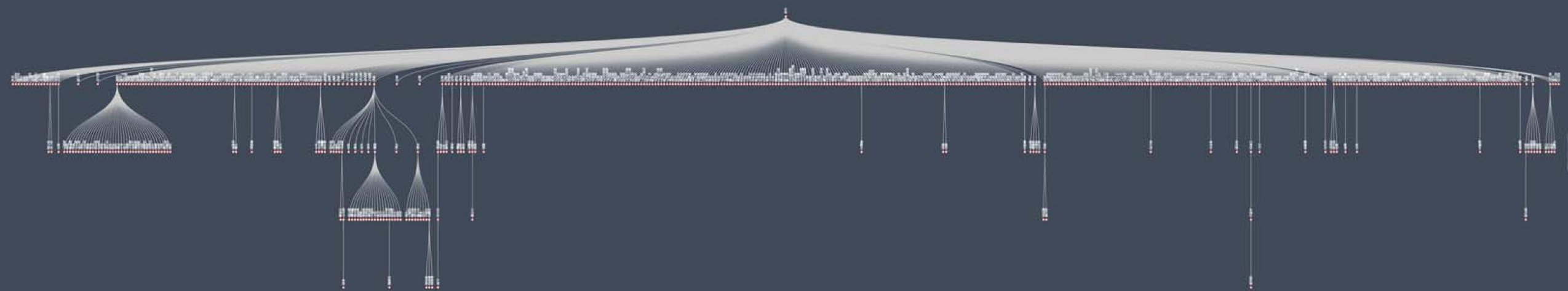
文欣
@普林斯顿东亚系

https://www.youtube.com/watch?v=S3afqSFvNYw&list=PLGgLzyv7BMga24KUn_dHULCYKY_Te2umr&index=3

From Capitals to “Capital Corridor”



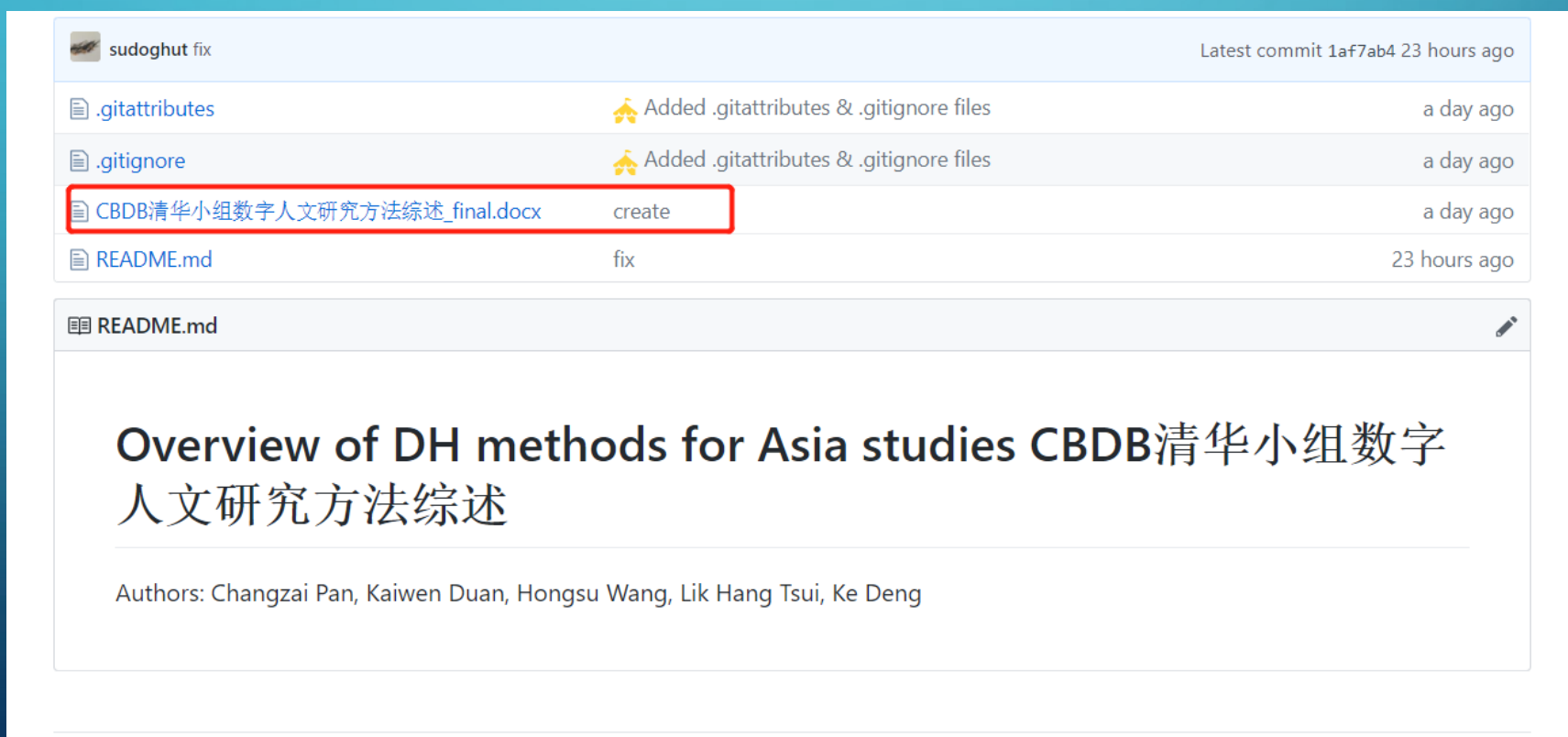
SNA 社会网络分析 - 朱熹四代弟子图谱



邱勇@北京大学信息管理系数字图书馆实验室
http://dh.kvlab.org/cbdb_vis/part2_dizinet.html

CBDB 清华小组数字人文研究方法综述

- <https://github.com/cbdb-project/overview-of-DH-methods-for-Asian-studies>



The screenshot shows a GitHub repository page for the user 'sudoghut' with the name 'fix'. The latest commit is 1af7ab4, made 23 hours ago. The file list includes:

File Name	Commit Message	Time Ago
.gitattributes	Added .gitattributes & .gitignore files	a day ago
.gitignore	Added .gitattributes & .gitignore files	a day ago
CBDB:清华小组数字人文研究方法综述_final.docx	create	a day ago
README.md	fix	23 hours ago

The README.md file content is as follows:

Overview of DH methods for Asia studies CBDB清华小组数字人文研究方法综述

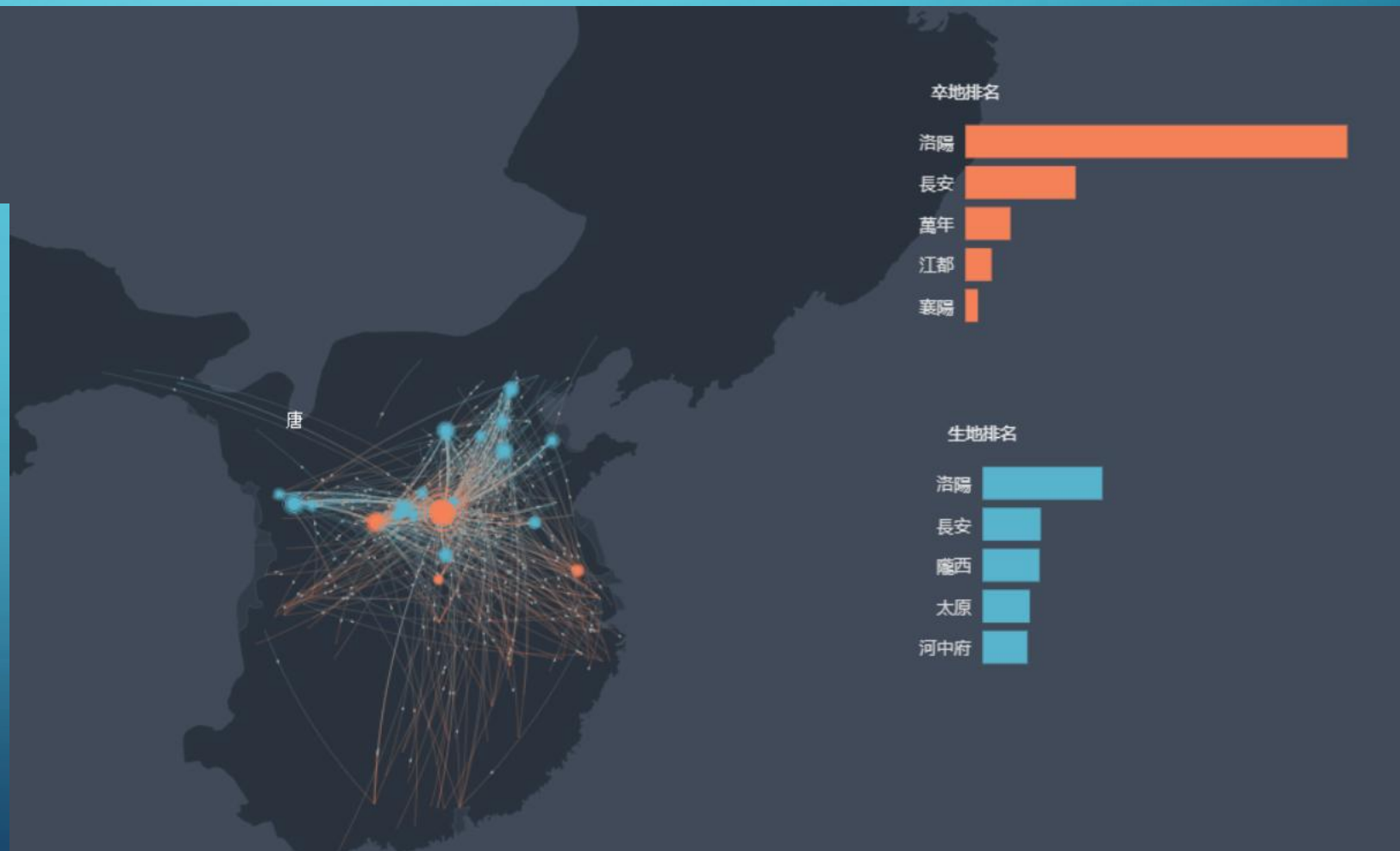
Authors: Changzai Pan, Kaiwen Duan, Hongsu Wang, Lik Hang Tsui, Ke Deng

The image features a dark teal background with a subtle gradient. In the four corners, there are decorative white line-art elements resembling circuit traces or neural network connections, with small circles at the end of the lines. The central text is white and reads:

技术专家与人文学者必须深度合作！

技术专家所忽视的：唐代人物迁徙

- 地点 (橙色表示死亡人数 > 出生人数, 蓝色反之)
- ▬ 迁徙路线 (生地->卒地)



A network framework of cultural history (2014/8)

<http://science.sciencemag.org/content/345/6196/558>

人文学者所忽视的：父子、爷孙籍贯的传递性

c_personid	BIOG MAIN.	ADDR CODES.c r	c_kin_code	c_kinrel_chn	c_kin_id	BIOG MAIN.	ADDR CODES_1.c r
3	安燾	開封	180	子	3000	安扶	開封
3	安燾	開封	180	子	3001	安日華	開封
4	查道	如皋	180	子	13314	查拱之	如皋
4	查道	如皋	180	子	119821	查循之	如皋
4	查道	如皋	180	子	16338	查塾	如皋
4	查道	如皋	180	子	13317	查應辰	如皋
4	查道	如皋	180	子	13315	查慶之	如皋
4	查道	如皋	180	子	13316	查冲之	如皋

Peter Bol, Michael Fuller, CBDB清华小组

父子籍贯的传递几率是 92.4%，爷孙籍贯的传递几率是 66.9%

统计学语言/模型: 概率与似然

STATISTICAL LANGUAGE/MODEL: POSSIBILITIES AND LIKELIHOOD

<Grandfather, Grandson>

$$= \sum P(\text{<Grandfather, Son>} | \rho)$$

$$= 66.9\%$$

<Grandfather, Grandson>

$$= \sum P(\text{<Father, Son>} | \rho) \cdot P(\text{<Father, Son>} | \rho)$$

$$= \sum P(\text{<Father, Son>} | \rho)^2$$

$$= 92.4\%^2 = 85.3\%$$

The background is a solid teal color with a gradient. In the four corners, there are decorative white line-art patterns resembling circuit traces or neural network connections, with small circles at the end of the lines.

THANKS!

HONGSUWANG@FAS.HARVARD.EDU